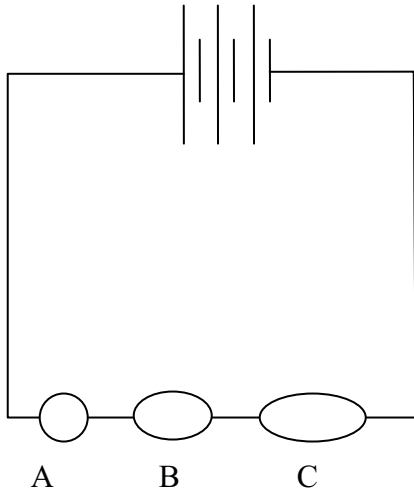


NAME _____

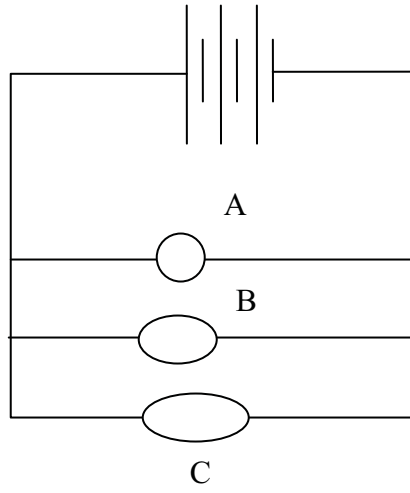
DATE _____

Physics 251 Pre-Laboratory 8

Given below is a diagram of a circuit containing three light bulbs.



Circuit I



Circuit II

In circuit I, the sequence of how bright the bulbs are goes from C, which is the brightest, to A, B is the dimmest.

- 1) In circuit I, rank the bulbs, from greatest to least, on the basis of their potential differences. Explain fully.
- 2) In circuit I, rank the bulbs by the change in electric potential energy for an individual charge? Explain.
- 3) In circuit I, rank the bulbs by the greatest work done on an individual charge by the electric field. Explain.
- 4) Rank the bulbs in circuit II by brightness. Explain