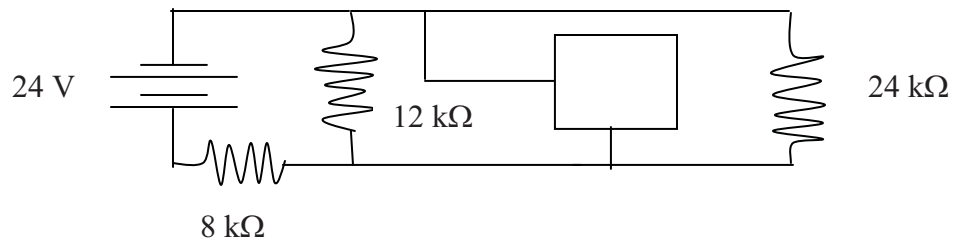


NAME _____

DATE _____

Physics 251 Pre-Laboratory 11

Consider the circuit shown below.



When the circuit above is first connected the current from the battery is 1.875 mA . Five second later the current from the battery is 1.5 mA . What is inside the box shown in the circuit? How did you determine this?

What will the potential difference(s) be across the element(s) in the box five seconds after the battery is connected? Explain fully.